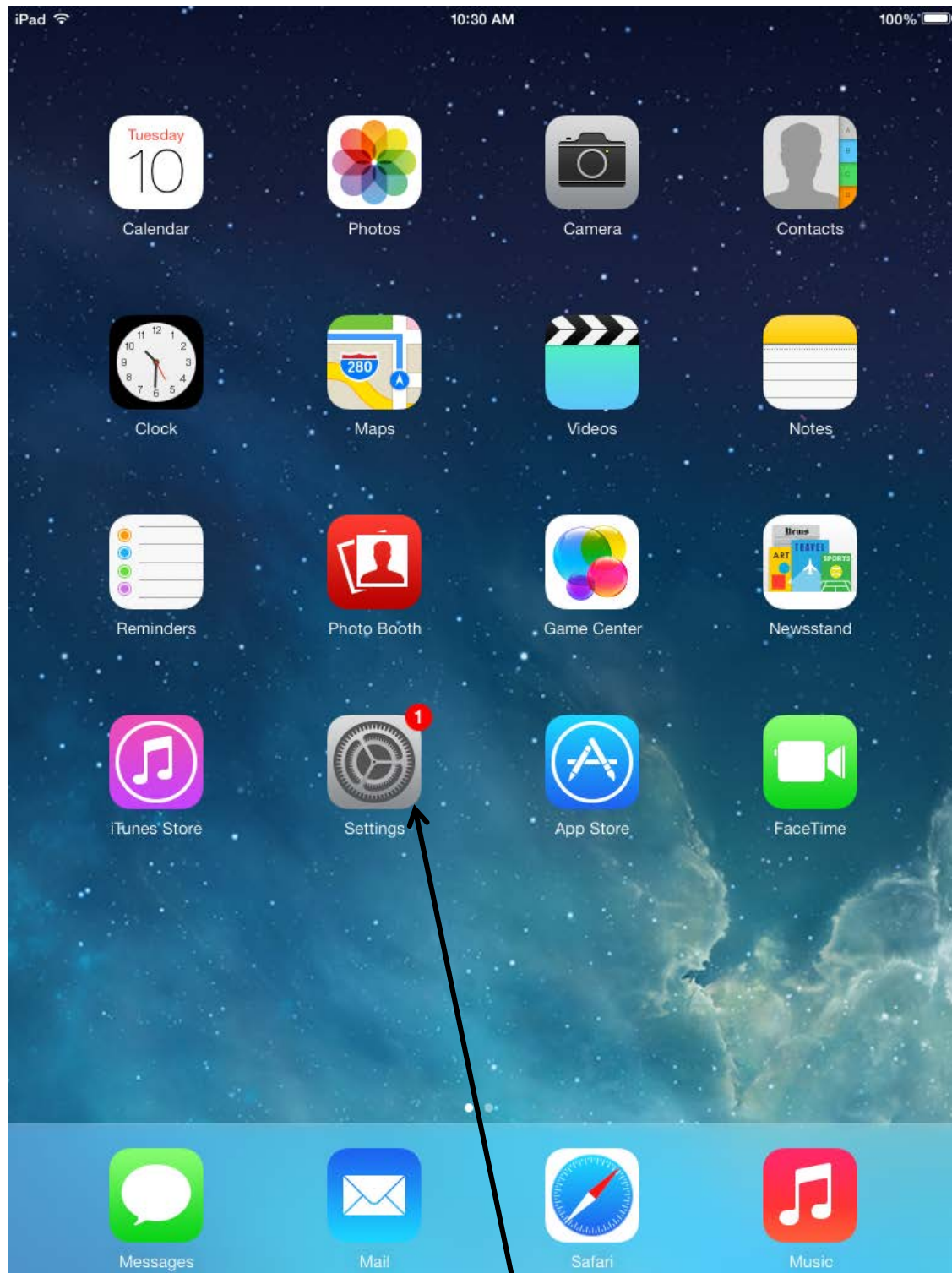


## Trouble downloading or launching an iPad App

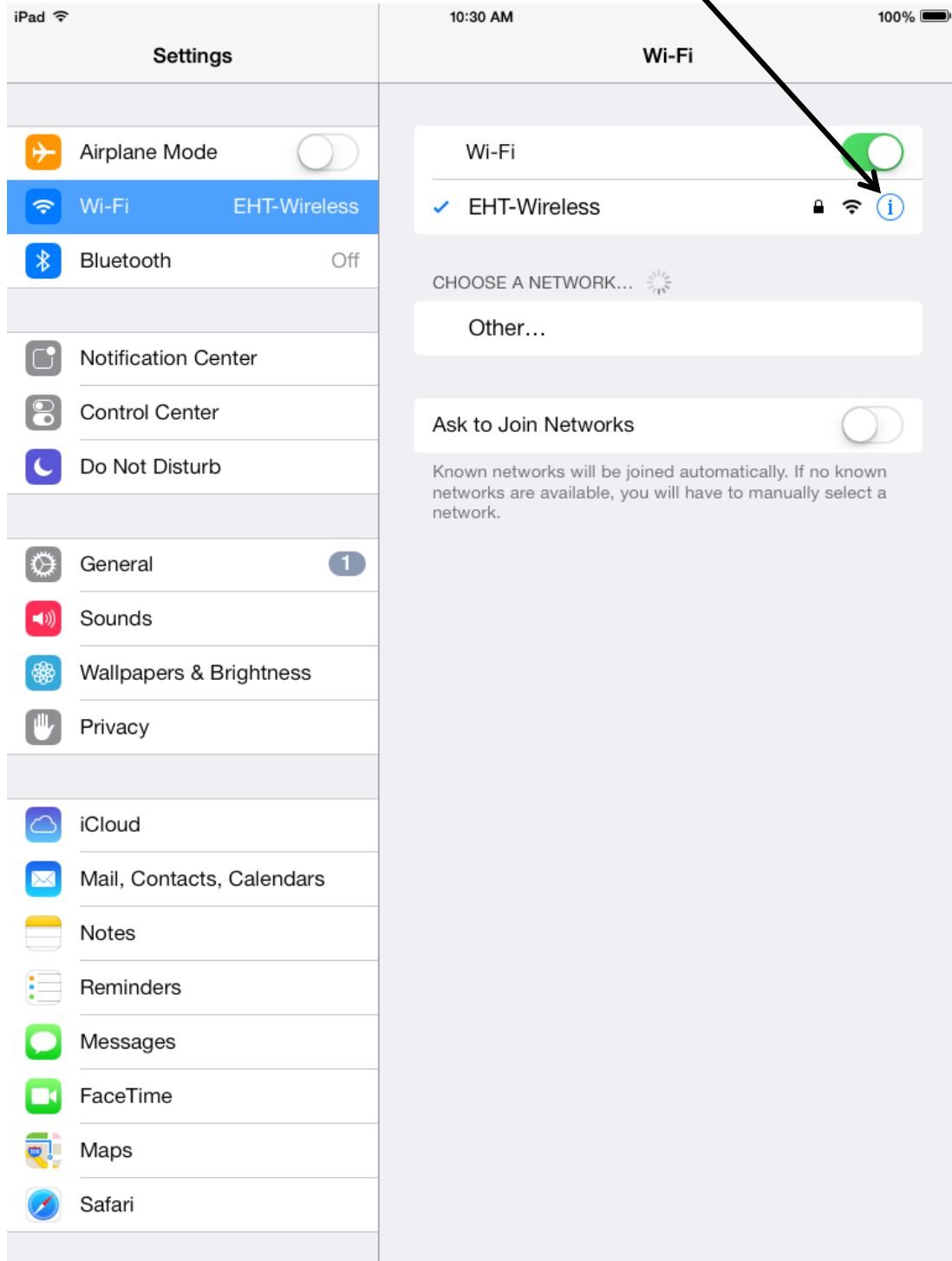


Go to settings

Select WiFi



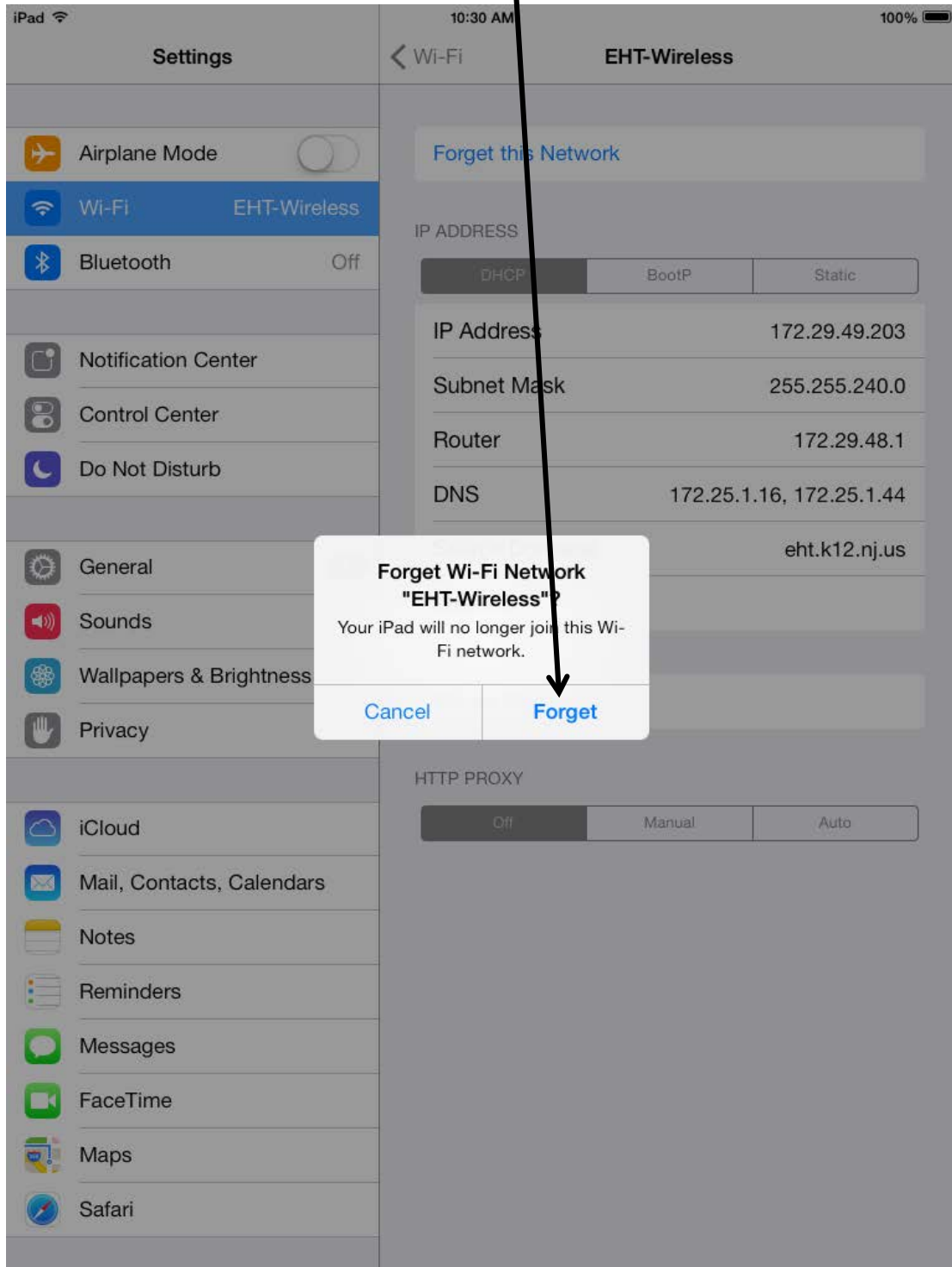
If its already checked select the “ i ”



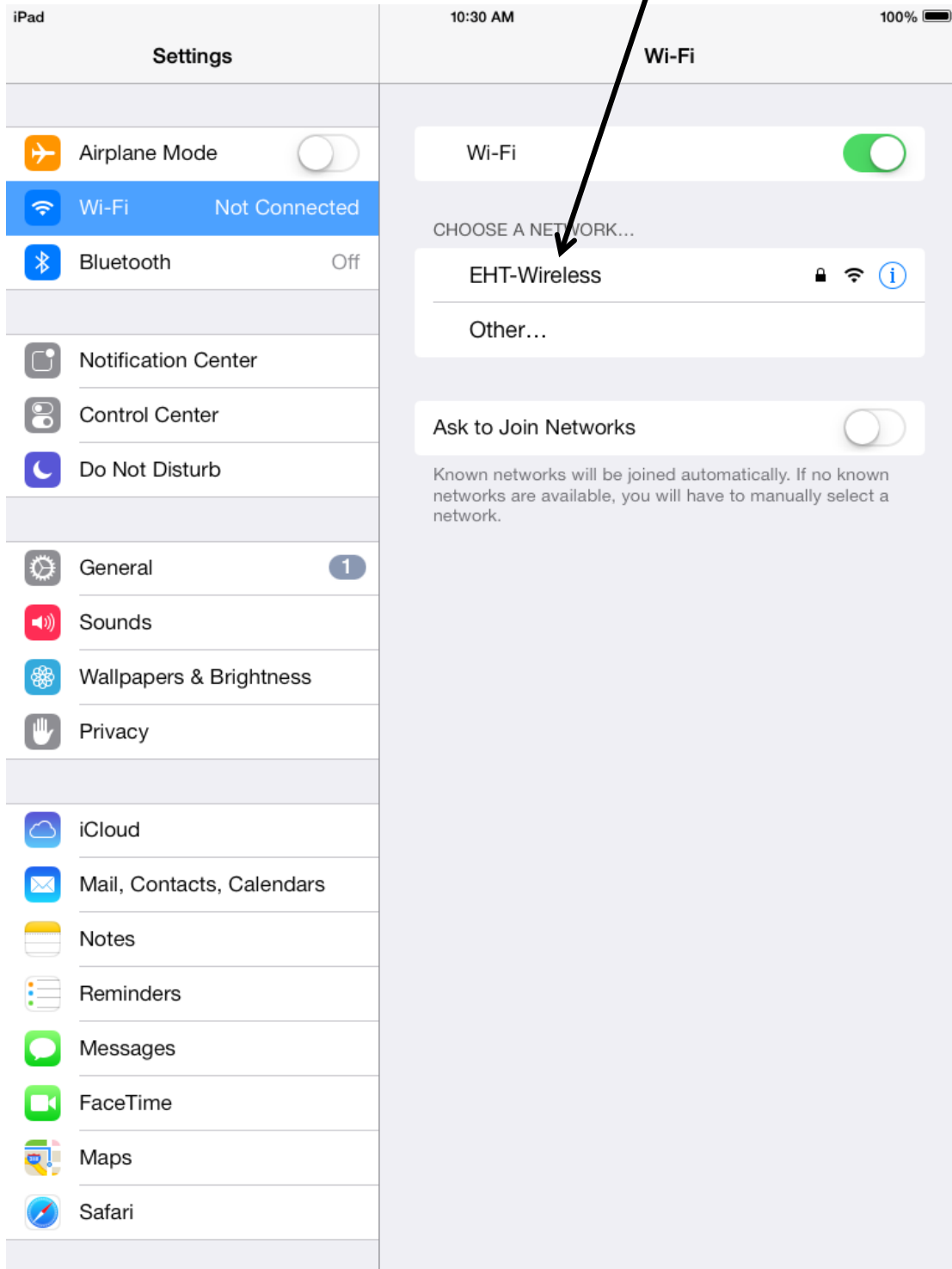
Choose "Forget this Network"



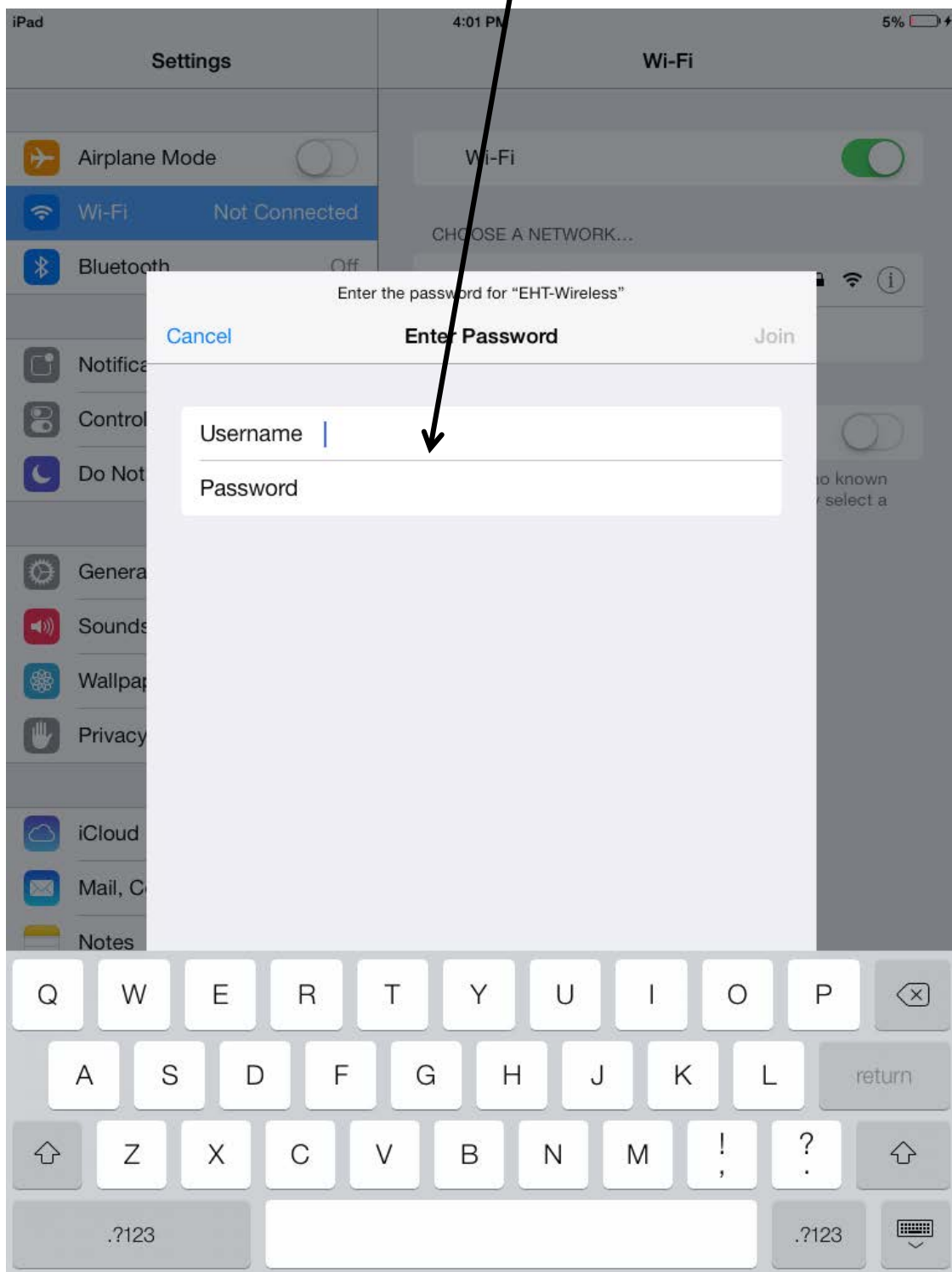
Confirm "Forget"



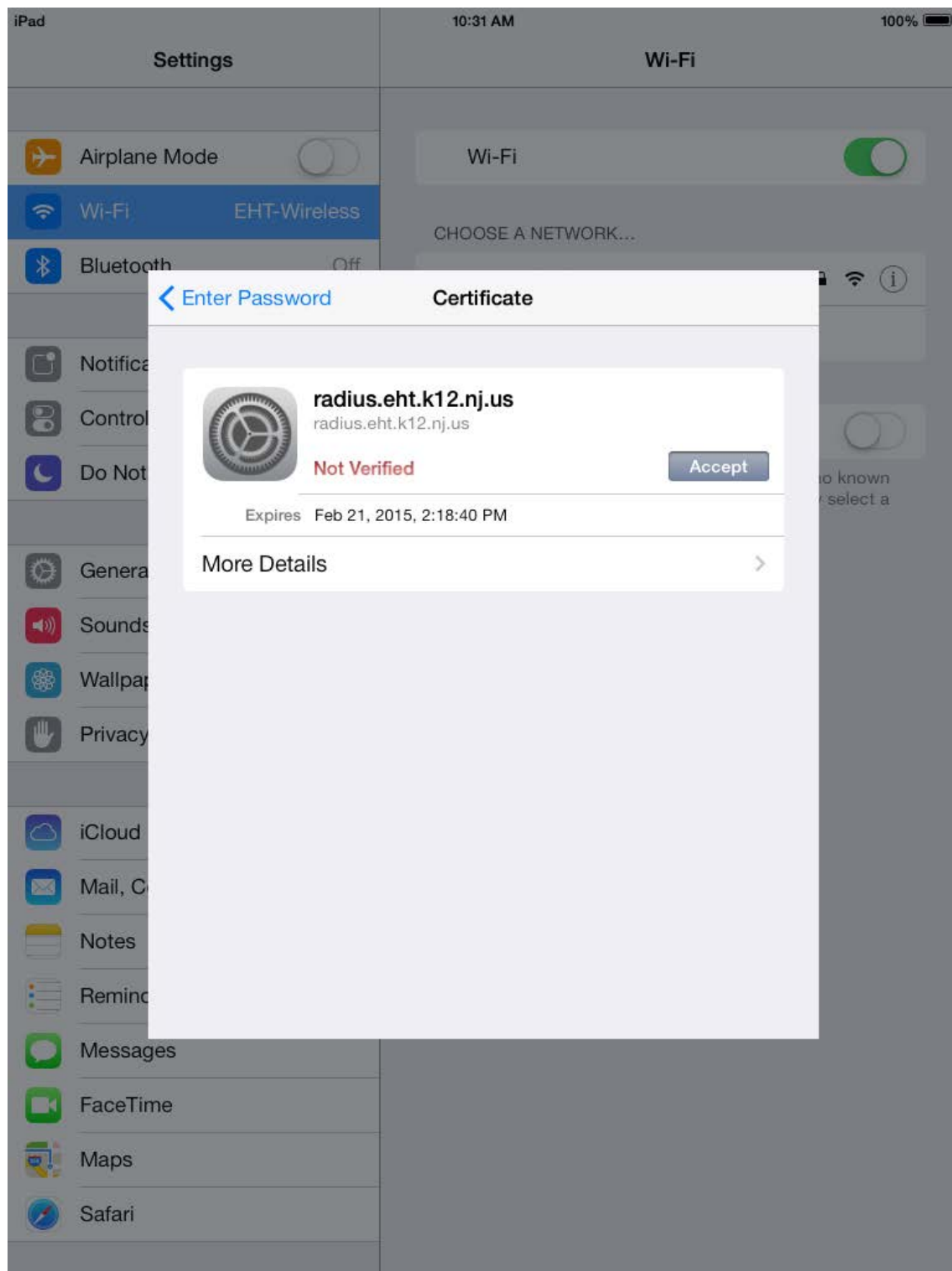
Go back to WiFi and choose “EHT-Wireless”



Enter Novell username and password then choose join



Hit "accept"

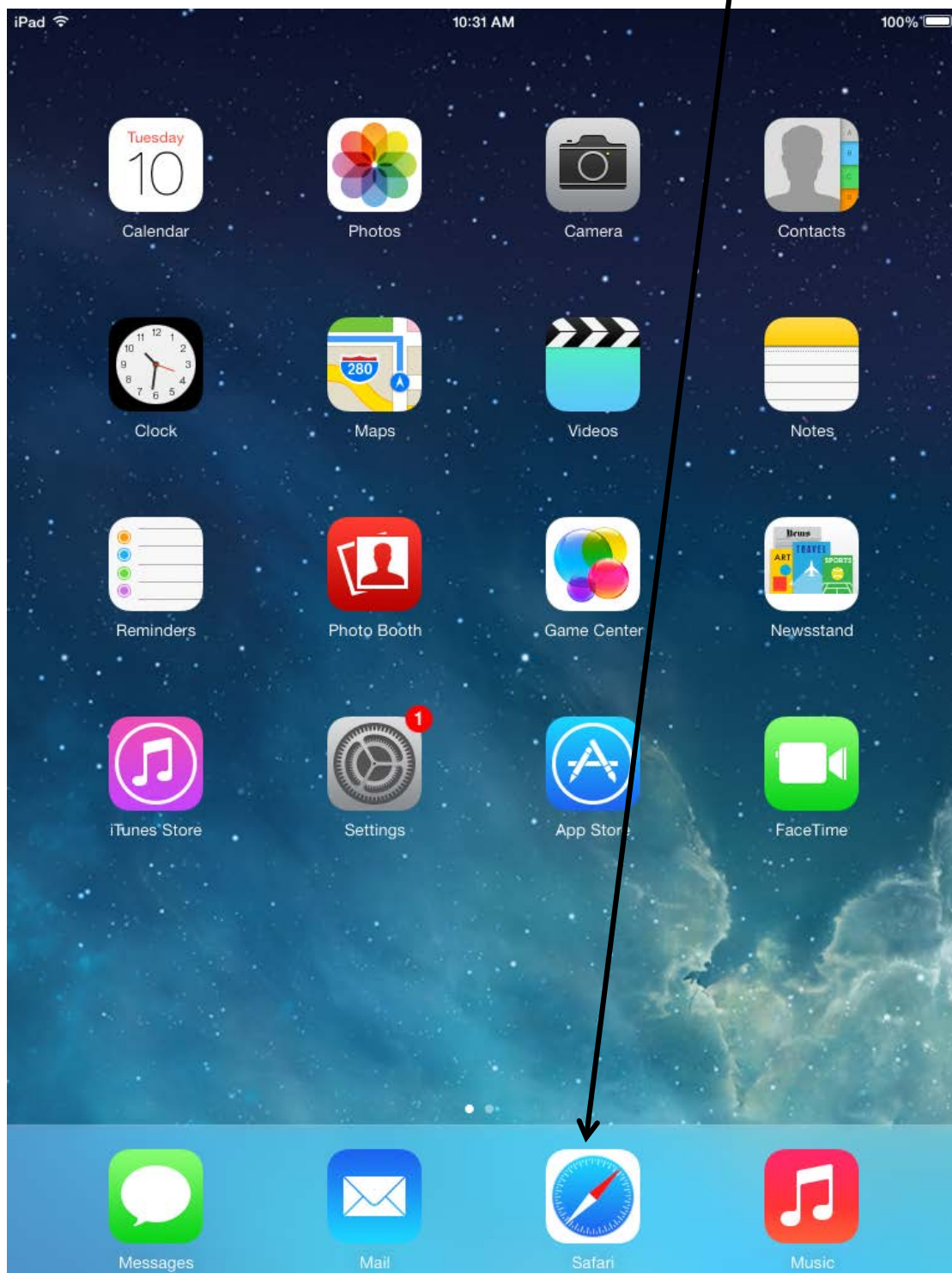


Go back to WiFi and make sure EHT-Wireless has a “Check Mark”

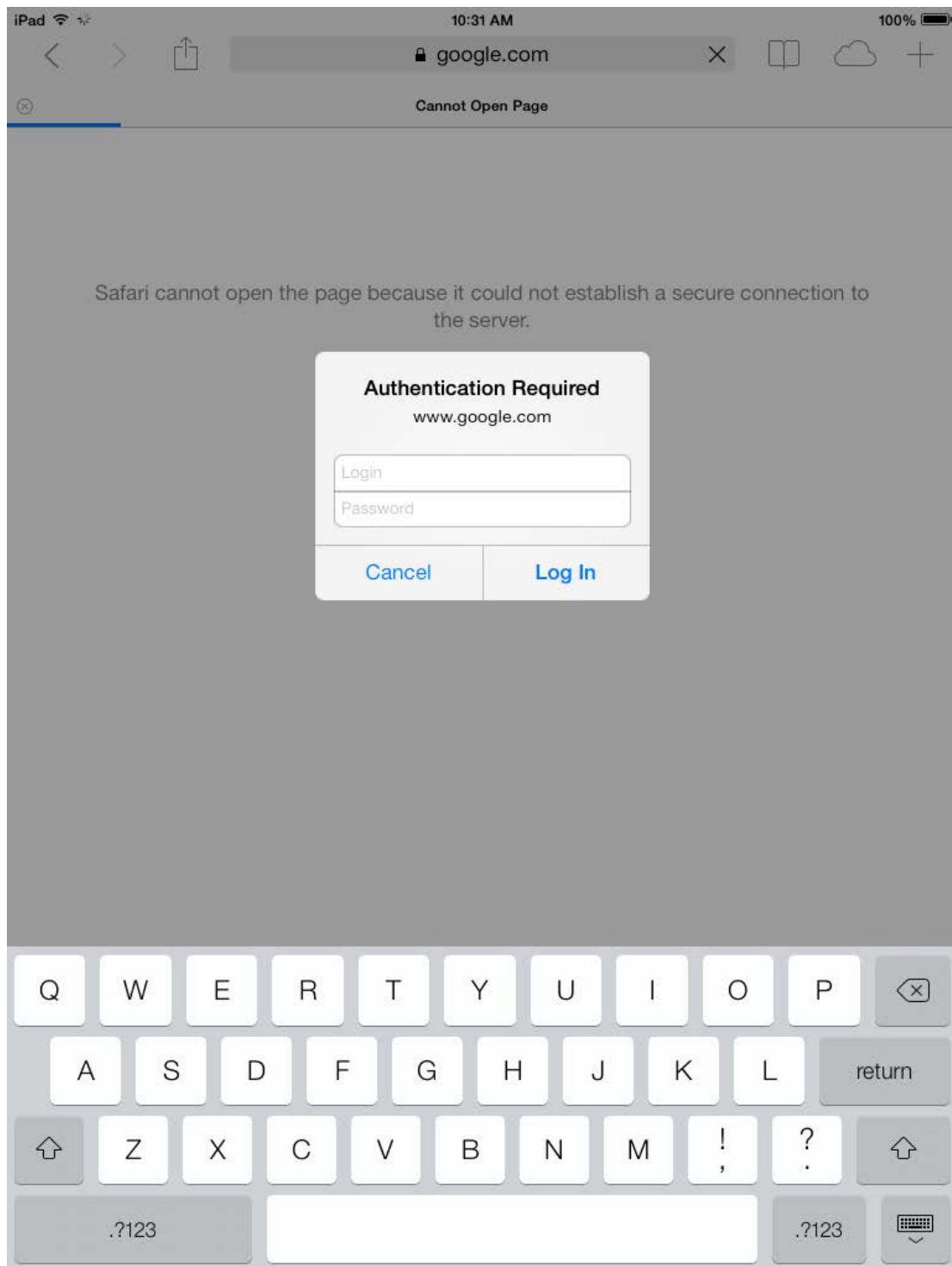




Go back out to the home screen and select Safari

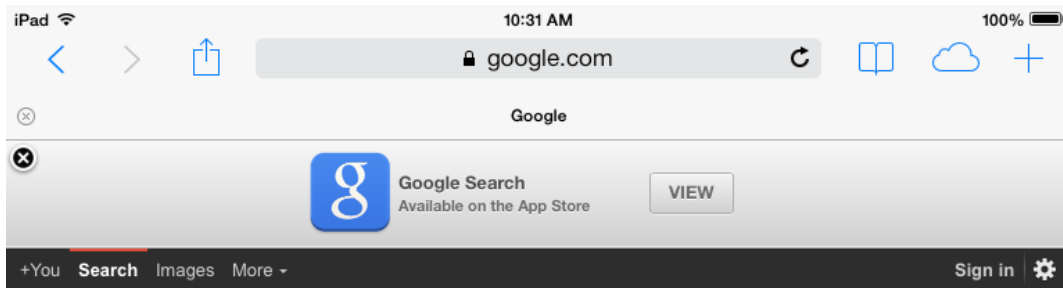


Enter [www.google.com](http://www.google.com) and you should be prompted to enter your Novell credentials again



After it successfully loads you can then go back out to the

app store and download an app or you can launch  
an app that has already been downloaded.



Google



Unknown - [Use precise location](#)

[Advertising](#)

[Business](#)

[About](#)

[Privacy & Terms](#)

[Settings](#)

Any questions call 1013